

## PEDESTRIAN GATES

### MP 152 / 53

The MP 152/53 series of full height turnstiles have been specifically developed to control simultaneous bi-directional pedestrian control of two independent turnstiles where limited space is available.

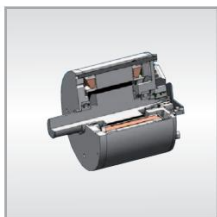
The turnstile has been designed as a modular system and can easily be assembled on site by hand and without the need of heavy lifting devices.

Additional space has also been made available for the installation of access control equipment. The turnstile is designed to be installed directly to concrete surfaces.



#### Housing and quality

Each turnstile consists of an outer cage section and a centre column incorporating a 3 x 120° offset 'U' bar configuration. The Controller and the drive are mounted on top of the cage and within a sheet metal enclosure. By default, all sections are fully "hot dip" galvanised and can be powder-coated in RAL 7042 (grey) upon request. Optional RAL colours and either 304 or 316 grade stainless steel construction are also available upon request.



#### Models and technology

There are two models of MP double turnstiles: . The MP 152 (motor-driven) is based on the MHTM™ technology that offers almost silent operation, low dynamic forces, impact detection, and very quick opening and closing times. The MP 53 (electromechanical) is rotated manually by the user. The locking mechanism contains a cam plate and two locking solenoids.



#### Comprehensive accessories

The MP series of full height turnstiles offers a comprehensive range of accessories like additional swing doors for e.g. cyclists, roofs, overhead lighting within the turnstile, etc. A specifically designed foundation frame provides easy installation on paved undergrounds. Customer-specific access control devices can be easily installed using the optional housing which is mounted at the outer cage section.

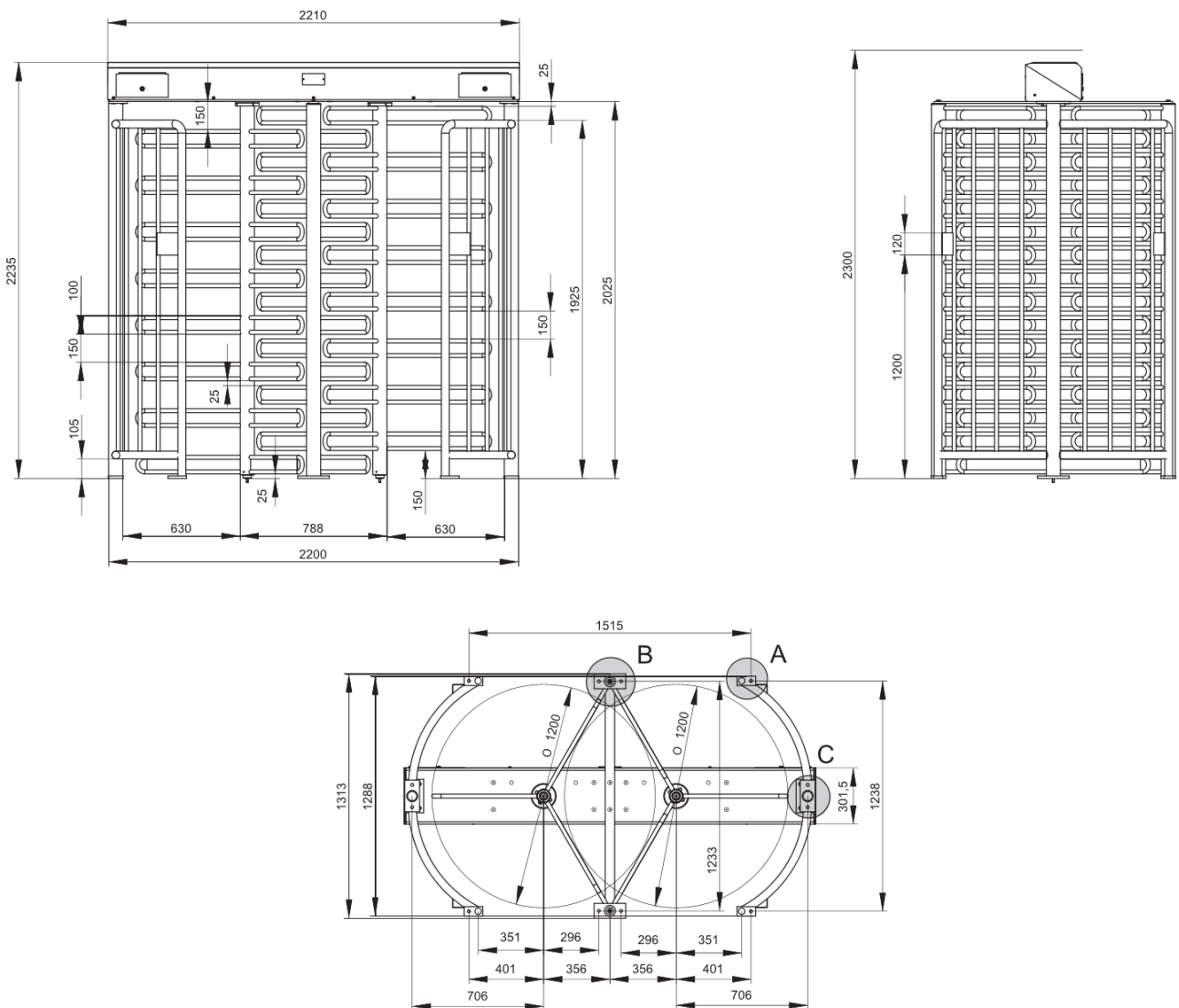


#### Safety

The drive unit of the MP 152 offers very low dynamic forces as well as impact detection. By default, the passage is free in case of a power failure. An optional locking device to stop entry in one or both directions is available upon request.

**Technical data**
**MP 152**
**MP 53**

Technology	motor-driven IHTM™	electromechanical
Voltage	230 V AC	230 V AC
Frequency	50 Hz	50 Hz
Amperage nom. / max.	0.3 / 1.0 A	0.32 / 0.44 A
Duty cycle	100 %	100 %
Protection class	IP 43	IP 43
Dimensions (WxLxH)	2210 x 1313 x 2235 mm	2210 x 1313 x 2235 mm
Weight (per turnstile)	315 kg	310 kg
Operating temperature	-25 to +45 °C	-25 to +45 °C

**Dimensional drawing**

**Κ. ΚΑΤΣΟΥΛΗΣ – ΑΥΤΟΜΑΤΕΣ ΠΟΡΤΕΣ Α.Ε.**

Λεωφ. Ελαιών 58, 145 64 Ν. Κηφισιά Τηλ: 210 62.50.203 Fax: 210 62.53.474, www.standoor.gr, e-mail: standoor@ath.forthnet.gr